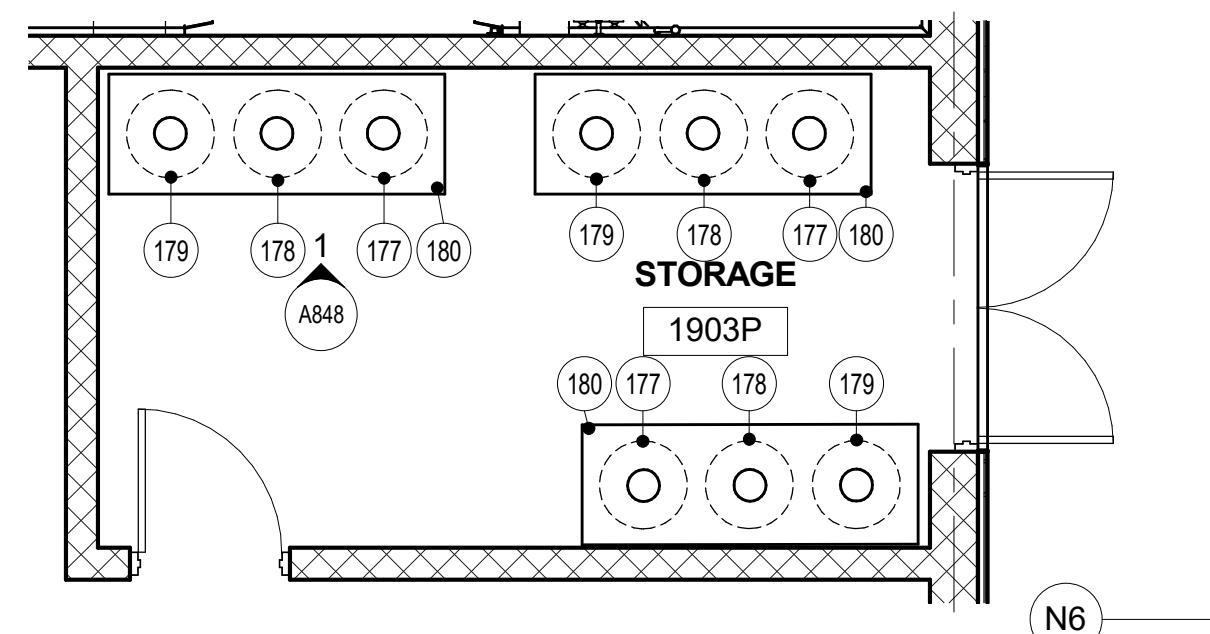


FOODSERVICE EQUIPMENT SCHEDULE-KITCHEN/SERVERY			
ITEM #	QTY	DESCRIPTION	REMARKS
17	1	WALK-IN REFRIGERATOR/FREEZER COMPLEX	
18	35	REFRIGERATOR/FREEZER SHELVING	
19	1	RACKED REFRIGERATION SYSTEM	
20	1	OPEN NUMBER	
21	4	MOBILE RACK	
22	1	OPEN NUMBER	
23	4	PAN STORAGE SHELVING	
24	8	HAND SINK	
25	1	OPEN NUMBER	
26	1	OPEN NUMBER	
27	1	PREP COUNTER W/ SINKS	RELOCATE/MODIFY
28	2	WALL SHELF	EXISTING/RELOCATE
29	1	OPEN NUMBER	
30	1	OPEN NUMBER	
31	1	DISPOSER	
32	1	SPRAY RINSE	
33	4	UTILITY CART	EXISTING/RELOCATE
34	1	WORKCOUNTER	
35	1	OPEN NUMBER	
36	1	EXHAUST HOOD (TYPE I)	
37	1	STAINLESS STEEL WALL PANEL	
38	1	FIRE PROTECTION SYSTEM	
39	1	CONVECTION OVEN, 2-SEC.	
40	1	OPEN NUMBER	
41	1	2-BURNER RANGE W/CABINET	EXISTING/RELOCATE
42	4	MOBILE TRASH BIN	
43	3	MOBILE COMPOST BIN	
44	1	WORKCOUNTER W/ OVERSHELF	
45	1	OPEN NUMBER	
46	1	SHEET PAN DOLLY	EXISTING/RELOCATE/MODIFY
47	4	SHEET PAN DOLLY	
48	1	WORKCOUNTER W/ SINK	
49	1	WORKCOUNTER W/SINK	
50	1	OPEN NUMBER	
51	1	MOBILE EQUIPMENT STAND	EXISTING/RELOCATE
52	1	20 QUART MIXER	
53	1	80 QUART MIXER	
54	1	HORIZONTAL CUTTER/MIXER	EXISTING/RELOCATE
55	1	WATER FILTRATION SYSTEM	
56	1	FIRE PROTECTION SYSTEM	
57	1	FLOOR GRATE & FRAME	
58	1	HOSE STATION	
59	1	ROLL-IN PROOFER, 4 RACK	
60	1	OPEN NUMBER	
61	9	OVEN RACK	
62	1	FLOOR GRATE & FRAME	
63	2	RACK OVEN, 1-SEC.	
64	1	DIVIDER ROUNDER	
65	1	OPEN NUMBER	
66	1	WORKCOUNTER	
67	1	WORKCOUNTER W/ RICHLITE TOP	
68	3	MOBILE INGREDIENT BIN	
69	1	WALK-IN REFRIGERATOR/FREEZER COMPLEX	
70	1	OPEN NUMBER	
71	1	OPEN NUMBER	
72	1	OPEN NUMBER	
73	1	MOBILE WORKTABLE	
74	1	BUN SLICER	
75	1	OPEN NUMBER	
76	1	OPEN NUMBER	
77	1	SHEETER/MOULDER	
78	1	EXHAUST HOOD (TYPE I)	
79	1	STAINLESS STEEL WALL PANEL	
80	1	OPEN NUMBER	
81	1	FIRE PROTECTION SYSTEM	
82	1	DEMAND CONTROL VENTILATION SYSTEM	
83	4	COMBI OVEN, 2-SEC.	
84	1	STEAMER, BOILERLESS, 2-SEC.	EXISTING/RELOCATE
85	1	OPEN NUMBER	
86	1	TILTING FRY PAN, 40 GALLON	
87	1	FLOOR GRATE & FRAME	
88	2	40 GALLON KETTLE	EXISTING/RELOCATE
89	1	OPEN NUMBER	
90	1	OPEN NUMBER	
91	1	ICE MAKER W/BIN	
92	1	OPEN NUMBER	
93	1	OPEN NUMBER	
94	1	OPEN NUMBER	
95	1	OPEN NUMBER	
96	1	OPEN NUMBER	
97	1	OPEN NUMBER	
98	1	OPEN NUMBER	
99	1	OPEN NUMBER	
100	1	OPEN NUMBER	
101	1	OPEN NUMBER	
102	1	OPEN NUMBER	
103	1	OPEN NUMBER	
104	1	OPEN NUMBER	
105	1	OPEN NUMBER	
106	5	TRAY CART	
107	1	SERVING COUNTER	
108	1	PROTECTOR SHELF SYSTEM	
109	1	DROP-IN COLD PAN, 5-WELL	
110	1	OPEN NUMBER	
111	1	HOT WELL, 1-WELL	
112	2	DROP-IN COLD PAN, 2-WELL	
113	1	OPEN NUMBER	
114	1	ROLL-THRU REFRIGERATOR, 2-SEC.	EXISTING/RELOCATE
115	1	OPEN NUMBER	
116	2	MOBILE RACK	EXISTING/RELOCATE
117	1	WORKCOUNTER W/ SINK	
118	4	TRASH BIN	
119	3	COMPOST BIN	
120	1	OPEN NUMBER	
121	1	OPEN NUMBER	
122	1	ACCELERATED OVEN	
123	2	PASS-THRU REFRIGERATED/HEATED CABINET, 2-SEC.	
124	1	WORKCOUNTER W/ SINK	
125	1	OPEN NUMBER	
126	1	WORKCOUNTER W/ SINK	
127	1	SERVING COUNTER	

FOODSERVICE EQUIPMENT SCHEDULE-KITCHEN/SERVERY			
ITEM #	QTY	DESCRIPTION	REMARKS
128	1	PROTECTOR SHELF SYSTEM W/ HEAT	
129	4	DROP-IN COLD PAN, 3-WELL	
130	1	OPEN NUMBER	
131	1	OPEN NUMBER	
132	2	HOT / COLD PAN, 4-WELL	
133	1	SERVING COUNTER	
134	1	PROTECTOR SHELF SYSTEM	
135	1	OPEN NUMBER	
136	1	OPEN NUMBER	
137	1	SERVING COUNTER	
138	1	PROTECTOR SHELF SYSTEM	
139	6	DISPLAY WARMER	
140	1	OPEN NUMBER	
141	1	SERVING COUNTER/ALA CARTE COUNTER	
142	1	PROTECTOR SHELF SYSTEM	
143	2	MOBILE WARMING CABINET	EXISTING/RELOCATE
144	1	WORKCOUNTER	
145	1	OPEN NUMBER	
146	1	OPEN NUMBER	
147	1	WORKCOUNTER	
148	1	REACH-IN REFRIGERATOR, 2-SEC.	
149	1	EXHAUST HOOD (TYPE I)	
150	1	OPEN NUMBER	
151	1	STAINLESS STEEL WALL PANEL	
152	1	FIRE PROTECTION SYSTEM	
153	1	DISPLAY REFRIGERATOR, 1-SEC.	
154	1	OPEN NUMBER	
155	1	OPEN NUMBER	
156	1	OPEN NUMBER	
157	1	UNDERMOUNT SINK	
158	1	ESPRESSO MACHINE	
159	1	OPEN NUMBER	
160	1	OPEN NUMBER	
161	3	SNACK SHELVING	
162	4	P.O.S. SYSTEM	BY OWNER
163	2	MILK CABINET	EXISTING/RELOCATE
164	6	CONDIMENT DISPENSER	
165	1	OPEN NUMBER	
166	6	FLATWARE DISPENSER	
167	6	NAPKIN DISPENSER	BY OWNER
168	1	WALK-IN REFRIGERATOR	
169	1	OPEN NUMBER	
170	1	OPEN NUMBER	
171	3	REFRIGERATED DISPLAY CASE	
172	1	MILK CABINET	
173	3	MOBILE CASHIER STAND	
174	1	OPEN NUMBER	
175	1	OPEN NUMBER	
176	1	OPEN NUMBER	
177	3	MOBILE COMPOST BIN	
178	3	RECYCLING BIN	
179	3	MOBILE TRASH BIN	
180	3	MOBILE TRASH COUNTER	
181	1	TRAY RETURN W/SOILED DISHTABLE	
182	2	DISPOSER	
183	2	SPRAY RINSE	
184	2	EXHAUST DUCT RISER	
185	1	BOOSTER HEATER	EXISTING/RELOCATE
186	1	DISHMACHINE	EXISTING/RELOCATE
187	1	FLOOR GRATE & FRAME	
188	1	CLEAN DISHTABLE	
189	1	WALL SHELF	EXISTING/RELOCATE
190	1	OPEN NUMBER	
191	3	MOBILE RACK DOLLY	
192	2	HOSE REEL	
193	1	EYE/FACE WASH STATION	SEE ARCHITECTURAL DRAWINGS
194	1	MOP SINK	
195	1	OPEN NUMBER	
196	1	UTILITY SHELF W/ MOP HANGER	
197	1	POT & PAN SINK	
198	7	MOBILE WORKTABLE	



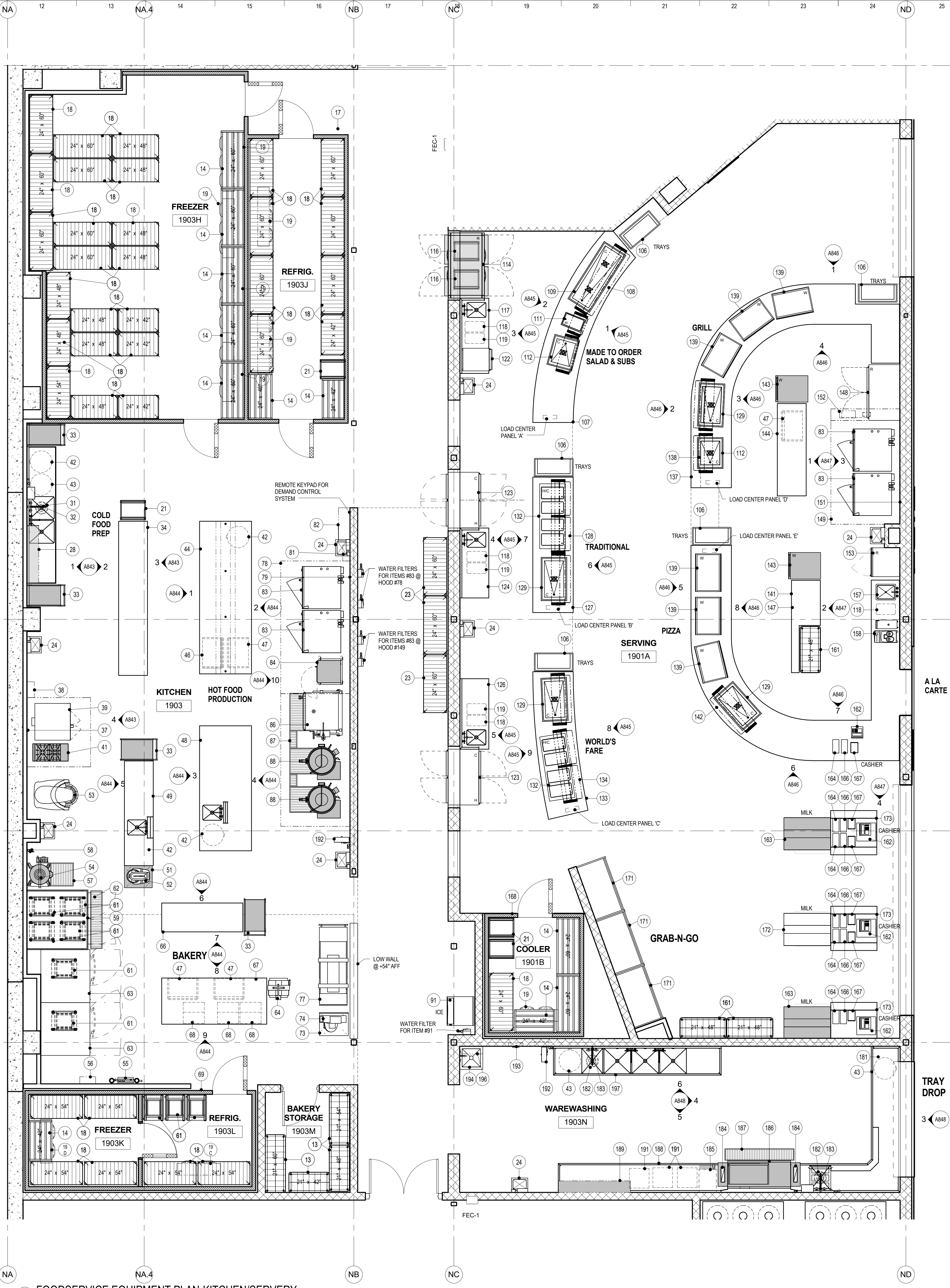
2 FOODSERVICE EQUIPMENT PLAN-TRASH COUNTER STORAGE
1/4" = 1'-0"

GENERAL ABBREVIATIONS

- AFF ABOVE FINISHED FLOOR
- CLG CEILING
- EDA DOWN FROM ABOVE
- EQ ELECTRICAL CONTRACTOR
- ELEC ELECTRICAL
- FSEC FOOD SERVICE EQUIPMENT CONTRACTOR
- GC GENERAL CONTRACTOR
- HVC HEATING/VENTILATION CONTRACTOR
- OW OUT OF WALL
- PLBG PLUMBING
- PC PLUMBING CONTRACTOR
- TTFD TELL-TALE FLOOR DRAIN (FLOOR DRAIN WITHOUT BACKWATER VALVE)

LEGEND

- DENOTES EXISTING EQUIPMENT



1 FOODSERVICE EQUIPMENT PLAN-KITCHEN/SERVERY
1/4" = 1'-0"